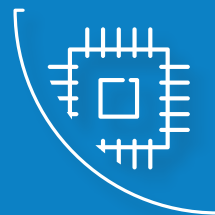




AUTO- APPLY EXPERT CATALOG

CCL'S LABELS FOR HOVER-DAVIS FEEDERS

CCL develops and manufactures a wide range of auto apply and masking labels specially designed to work with Hover-Davis feeders



Tel: +972-9-769-1700 | Fax: +972-9-748-6270
israelsales@cclind.com | <http://nortecid.com>
<https://ccldesignelectronics.com/>



| Material Code | Material Description | Properties and Applications | Most Recommended Ribbons | Alternative Ribbons |
|---------------------------------|--|---|--|---------------------|
| 596 597 670 930 988 | 2 mil white Polyimide with paper liner *596- recommended for small size labels. | 2 mil white Polyimide labels, suitable for most labeling needs in SMT assembly lines - Auto Apply or manual placement. Withstand both lead & lead free reflow processes and also durable to wave soldering, cleaning, conformal coating, heat and solvents. 670, 988 - Durable to the majority of processes. 596, 597, 930 - recommended for more aggressive processes. | For materials: 596, 597, 670, 988 Recommended ribbon: 104 For material: 930 Recommended ribbon: 140 | 103 318 |
| 470 471 595 680 820 | 2 mil white Polyimide with Polyester liner | 2 mil white Polyimide, suitable for most labeling needs in SMT assembly lines with emphasis on Auto Apply placement. Withstand both lead/lead free reflow processes. Durable to wave soldering, cleaning, conformal coating, heat and solvents. 595, 680 - Durable to the majority of processes. 470, 471, 820 - Recommended for aggressive processes. | For materials: 471, 595, 680 Recommended ribbon: 104 For material: 820 Recommended ribbon: 140 | 103 |
| 767 | 2 mil green Polyimide | 2 mil green Polyimide, suitable for most labeling needs in SMT assembly lines as well as to distinguish lead free PCB's from leaded PCB's. | 140 | 103 |
| 752 | 2 mil yellow Polyimide | 2 mil yellow Polyimide, suitable for most labeling needs in SMT assembly lines. | 140 | 103 |
| 770 | 2 mil light yellow Polyimide | 2 mil light yellow Polyimide, suitable for most labeling needs in SMT assembly lines. | 104 | |
| 750 | Matte tan Polyimide | Matte tan Polyimide, suitable for most labeling needs in SMT assembly lines. | 104 | 103 |
| 720 | 2 mil ESD safe white Polyimide | 2 mil ESD safe white Polyimide, suitable for most labeling needs in SMT assembly lines. | 104 | 103 |
| 949 | 5 mil Polyimide silicone adhesive tape | 5 mil Polyimide masking material. Used for electrical isolation, wave soldering masking and reflow-gold finger masking. | | |





HOVER DAVIS FEEDERS ENABLE AUTOMATED LABEL APPLICATION USING YOUR EXISTING SMT MACHINES

- Reduce cost and minimize manual labor with automation
- Faster and more accurate than manual placement
- Increase utilization of your existing SMT machines
- Premium high-temperature labels by CCL
- Blank or preprinted, laser markable and removable material options
- Flexibility in sizes ranging from 3mm up to 58mm
- UL approved label and ribbon options

CCL offers Auto Apply labels in any shape or form with compatible ribbons, available with Paper or Polyester liners.



PART NUMBERS CODE IS AS FOLLOWS

